



2014-2015
WEBER READS

Charlotte's Web

AND OTHER
WRITINGS BY
E. B. WHITE



Dear Weber County Residents:

Weber Reads is designed to create a community-wide discussion by providing opportunities for people to read, reflect, and engage in meaningful dialogue built around selected texts that help illuminate experiences and beliefs while transcending group values to unite us as human beings. The success of this program has been acknowledged by the American Library Association, which has three times chosen Weber Reads to receive its Community Reading Program “Best of Show Award.”

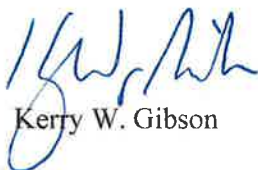
This year we will be reading the works of E. B. White, including the beloved children’s book, *Charlotte’s Web*. The 60th year edition of *Charlotte’s Web*, the *Essays of E. B. White*, and *The Elements of Style*, White’s guide to good writing, are being made available throughout the Weber County Library System.

To help facilitate involvement of young people in our discussions, every school in the County will receive Weber Reads teaching materials, created by teacher consultants from the Wasatch Range Writing Project, the local site of the National Writing Project. Copies of appropriate texts, purchased in part by Friends of the Weber County Library, are also being given to each school library along with an invitation to have librarians from the Weber County Library visit classrooms to deliver a special presentation on the work of E. B. White. The presentation will be educational and will encourage students to continue reading for fun.

The Library Board will sponsor those local book groups wishing to hold their discussion at a Weber County Library and invite the community to join their conversations. If requested, the Library will provide refreshments and a discussion leader for those meetings. You are also invited to attend special programs hosted at the Library, on the campus of Weber State University, and throughout the community. Watch the Library Web site (www.weberpl.org) for details.

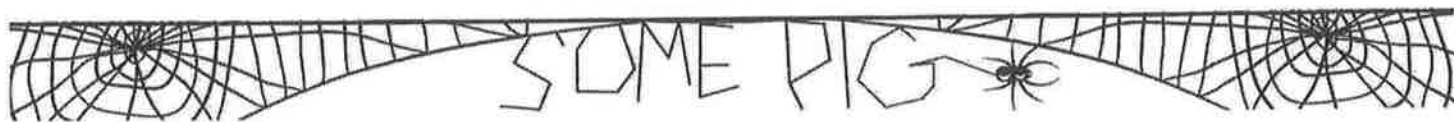
Please join us. We hope no one will be left out of the discussion.

Weber County Commissioners,


Kerry W. Gibson


Jan M. Zogmaister


Matthew G. Bell



Students, Teachers, Media Specialists, and Administrators

Welcome to

WEBER READS
Charlotte's Web
AND OTHER WRITINGS BY E. B. WHITE

In a 1952 New York Times review, titled "Along Came a Spider," the writer Eudora Welty said of *Charlotte's Web*: "What the book is about is friendship on earth, affection and protection, adventure and miracle, life and death, trust and treachery, pleasure and pain, and the passing of time. As a piece of work it is just about perfect, and just about magical in the way it is done." (Michael Sims, *The Story of Charlotte's Web*.)

For over half a century, readers have agreed with Eudora Welty, finding the writing of E. B. White, whether in his books for children or in his essays published in the New Yorker and elsewhere, work that enriches and explains so much of life that it is a lifetime treasure.

We are delighted to bring this writing to the community through our lesson plans, books, programs, and discussion groups. We especially want to encourage parents and children to read *Charlotte's Web* together, whether for the first time or for the twentieth. Many of us remember reading it with our parents, or hearing it read, and it was a high point of our childhood. Like the best of literature for young people, *Charlotte's Web* also serves as a framework for adult discussion, linking individuals, communities, and cultures by stimulating us to make connections between our ancestors and ourselves, between one culture and another, between the community and the individual.

In this box you will find lesson plans written by teachers in the Wasatch Range Writing Project and edited and produced by the staff of the Weber County Library System, along with books selected and purchased by the Friends of the Weber County Library. Each box contains a copy of *Charlotte's Web* and a science text related to E. B. White's work. Other learning appropriate selections, depending on the grade level for which the box is designed, may include essays by E. B. White, *The Elements of Style*, his guide to writing, and books about the author.

Also enclosed is a list of all the lessons written this summer for every grade level and a bibliography. The lessons not included in your box, because they are focused on another grade level, can be found on the Weber County Library's Web site (www.weberpl.org). Likewise, all of the books on the bibliography are not in every box as some are for readers in other grades or are supplementary texts. All of the books are, of course, available at your local library.

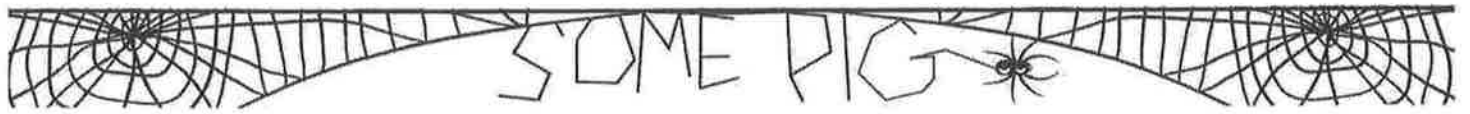


Finally, we have included a list of the teachers who wrote these lessons and their contact information. We welcome your comments, questions, and suggestions for extensions and adaptations. Such collaboration is at the heart of both Weber Reads and the Wasatch Range Writing Project.

Weber Reads is a community organization sponsored by the Weber County Commission, Weber County Library, the Standard Examiner, and Weber State University. Working together, we have previously prepared lessons and purchased and distributed books on the following topics:

- *Beowulf* – 2008
- *Frankenstein*, by Mary Shelly – 2009
- *The Adventures of Tom Sawyer* and *The Adventures of Huckleberry Finn*, by Mark Twain – 2010
- *Narrative of the Life of A Slave*, by Fredrick Douglass and *Life of A Slave Girl*, by Harriet Jacobs – 2011
- The Founders and their Documents – 2012
- Emily Dickinson – 2013
- *The Odyssey*, by Homer – 2014

Materials on these topics may be found on Weber County Library and Weber State University Web sites.



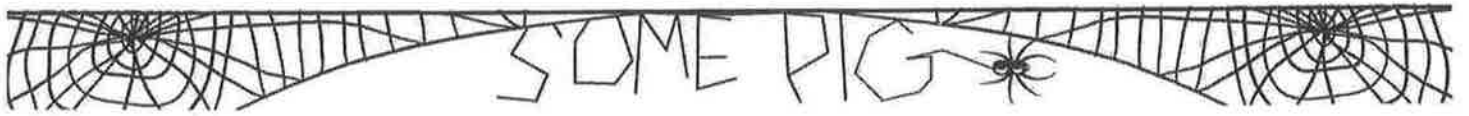
WEBER READS
Charlotte's Web
AND OTHER WRITINGS BY E. B. WHITE

School Presentations

Let the Weber County Library youth services staff help bring *Charlotte's Web* and the work of E. B. White into your classroom.

Once again, in conjunction with Weber Reads, we will offer a free, fun 30-45 minute presentation on *Charlotte's Web* available January through March 2015. The presentation is for students in grades 4-12 and can be adapted in length and focus. Please schedule your classroom visit at least one month in advance. The number of presentations is limited so schedule your class early. Groups of 30-40 students are preferred and presentations can be given back-to-back to accommodate class sizes.

For more information, or to schedule an elementary presentation, contact Phoebe Carter at 801-337-2639 or pcarter@weberpl.org. To schedule a presentation for secondary students, please contact Jessica Whetman at 801-337-2632 or jwhetman@weberpl.org.



WEBER READS
Charlotte's Web
AND OTHER WRITINGS BY E. B. WHITE

WASATCH RANGE WRITING PROJECT
2014 Teacher Consultants Contact Information

- Felicia Bedwell.....fbedwell@wsd.net
- Joe Burke.....joburke@wsd.net
- Judy Chesley.....jchesley@dmail.net
- Angela Choberkaangela.choberka@gmail.com
- Pat Lowe.....pjhlowe@gmail.com
- Sharon Mumford.....smumford@wsd.net
- Gwen Romero.....gromero@morgansd.org
- Margaret Rostkowski.....mrostkowski@weber.edu
- Paula Simonsonpasimonson@wsd.net
- DeeAnne Squire.....credinta_84770@yahoo.com
- Katy Wilson.....katywilson@gmail.com
- Natalie Wilsonnawilson@wsd.net



WEBER READS
Charlotte's Web
 AND OTHER WRITINGS BY E. B. WHITE

THE LESSONS

AUTHOR

Elementary Only

"Fiction Sprinkled with Facts" Sharon Mumford
 "Some Student!" Sharon Mumford

Grades 4-12

"Charlotte's Web – Character Analysis" Felicia Bedwell
 "Charlotte's Web – Figurative Language" Felicia Bedwell
 "Charlotte's Web – Opinion Writing" Felicia Bedwell
 "Farms are a Peculiar Thing" Judy Chesley
 "Let's Get Descriptive" Judy Chesley
 "The Escape, A Close Read" Judy Chesley
 "Stronger Than Steel: Spider Silk DNA Usage" Angela Choberka
 "A Matter of Style" Pat Lowe
 "As I Remember" Pat Lowe
 "Saving Wilbur with Aristotle's Modes of Persuasion" Gwen Romero
 "Wilbur and White: Coming of Age,
 A Thematic Study and Synthesis Exercise" Gwen Romero
 "Writing Calisthenics with Charlotte" DeeAnne Squire
 "Caught in a Web" Katy Wilson
 "Friendships in Charlotte's Web and Our Lives" Natalie Wilson
 "Letters to Characters in Charlotte's Web" Natalie Wilson

Secondary Only

"One Man's Meat is Another Man's Murder? –
 It's Just Your Point of View" Paula Simonson
 "E. B. White Essays: An Analysis of Writing Style and Rhetoric" Joe Burke
 "Once More to the Lake as a Rhetorical Study" Gwen Romero